

AMERICANS WITH DISABILITIES ACT (ADA) TRANSITION PLAN FOR PUBLIC FACILITIES

Town of Clayton, Indiana



4844 Iowa Street
Clayton, IN 46118

September 8, 2022

TABLE OF CONTENTS

1. INTRODUCTION	2
2. TRANSITION PLAN DEVELOPMENT	3
A. ADA COORDINATOR	3
B. GRIEVANCE PROCEDURE	4
C. SELF-EVALUATION/COMMITMENT/SCHEDULE	5
D. ADA STANDARDS AND GUIDELINES	5
3. PUBLIC INVOLVEMENT	6
4. IMPLEMENTATION	6
APPENDICES	
APPENDIX A: COMPLAINT/GRIEVANCE FORM	7
APPENDIX B: BUILDING AND STRUCTURE REVIEW	9
APPENDIX C: SIDEWALK AND CURB RAMPS REVIEW	43

INTRODUCTION

The Americans with Disabilities Act (ADA) was enacted on July 26, 1990, and later amended effective January 1, 2009. As written and implemented, the ADA provides comprehensive civil rights protections to persons with disabilities in the areas of employment, state and local government services, access to public accommodations, transportation, and telecommunication. The ADA is a companion civil rights legislation to the Civil Rights Act of 1964 and Section 504 of the Rehabilitation Act of 1973. To be protected by the ADA, one must have a disability or have a relationship or association with an individual with a disability. An individual with a disability is defined by the ADA as a person who has a physical or mental impairment that substantially limits one or more major life activities, a person who has a history or record of such impairment, or a person who is perceived by others as having such impairment. The ADA, however, does not specifically name all the impairments that are covered. The ADA is divided into five sections covering the following topics:

Title I: Employment

Title II: Public Services (and Transportation)

Title III: Public Accommodations (and Commercial Facilities)

Title IV: Telecommunications

Title V: Miscellaneous Provisions

Title II specifically prohibits state and local governments from discriminating against persons with disabilities or from excluding participation in or denying benefits of programs, services, or activities to persons with disabilities. It is under this title that this transition plan has been prepared. This transition plan is intended to outline the methods by which physical changes should be made to give effect to the non-discrimination policies described in Title II.

TRANSITION PLAN DEVELOPMENT

To ensure program accessibility for people with disability in the community, the Town of Clayton has developed a Transition Plan, which is to be considered good practice.

This Transition Plan for Public Facilities considers the following:

A. ADA COORDINATOR:

Effective communication is essential to address all the complaints or concerns of all individuals. To keep the lines of communication open, and thereby ensure effective communication between all parties, the Town of Clayton has appointed the following person as the ADA Coordinator:

Town of Clayton
Jeff Eder, ADA Coordinator
4844 Iowa Street,
Clayton, IN 46118
Phone: (317) 539-2333
Email: jeff.eder@townofclayton.us

The ADA Coordinator shall coordinate the Town's efforts to comply with and carry out its responsibilities under Title II of the ADA, including any investigation of any complaint communicated to the ADA coordinator. Such complaints may take the form of alleging noncompliance with ADA mandates or alleging any actions that would be prohibited under ADA. The Town shall make available to all interested individuals the name, office address, and telephone number of the employee(s) so designated and shall adopt and publish procedures for the prompt and equitable resolution of complaints. Every complaint must be directed in writing to the ADA Coordinator.

B. GRIEVANCE PROCEDURE

The grievance procedure established below is intended to adhere to the standards outlined in the ADA. The procedure must be used by anyone who wishes to file a complaint alleging discrimination on the basis of disability in the provisions of services, activities, programs, or benefits provided by the Town of Clayton. The complaint should be in writing and contain information about the alleged discrimination such as name, address, phone number of the complainant and location, date, and description of the problem. An example grievance form can be found in Appendix A of this document. Alternative means of filing complaints, such as personal interviews or recordings of the complainant will be made available for persons with disabilities upon requests. The complaint should be submitted by the grievant and/or his/her designee as soon as possible but no later than 180 calendar days after the alleged violation to the ADA Coordinator at the address shown under 'A. ADA COORDINATOR' on page 3. Within 15 calendar days after receipt of the complaint, the ADA Coordinator or his/her designee will meet with the complainant to discuss the complaint and the possible resolutions. Within 15 calendar days of the meeting, the ADA Coordinator or his/her designee will respond in writing, and where appropriate, in a format accessible to the complainant, such as large print, Braille, or audio tape. The response will explain the position of the Town of Clayton and offer options for substantive resolution of the complaint. If the response by the ADA Coordinator or his/her designee does not satisfactorily resolve the issue, the complainant or his/her designee may appeal the decision within 15 calendar days after receipt of the response to the ADA Coordinator or his/her designee. Within 15 calendar days after receipt of the appeal, the ADA Coordinator or his/her designee will meet again with the complainant to discuss the appeal and possible resolutions. Within 15 calendar days after the meeting, the ADA Coordinator or his/her designee will respond in writing, and, where appropriate, in a format described above that is accessible to the complainant, with a final resolution of the complaint. All written complaints received by the ADA Coordinator or his/her designee, appeals to the ADA Coordinator or his/her designee, and responses from ADA office will be retained by the Town of Clayton for at least three years.

C. SELF-EVALUATION/COMMITMENT/SCHEDULE

HWC Engineering, acting as a representative of the Town of Clayton, has performed a cursory review of all town-owned properties and structures for ADA compliance. The results of this evaluation of all the town-owned properties and structures can be found in Appendix B. HWC Engineering, acting as representative of the Town of Clayton has also performed a review of all sidewalks and curb ramps for ADA compliance. The results of this evaluation will be found in Appendix C.

The Town is committed to making sidewalks, curb ramps, public areas and town-owned facilities accessible to all pedestrians including those with disabilities. This will be accomplished through the following programs:

- All new construction, reconstruction, road construction or alterations, including federal projects under the control and/or inspection of the Town of Clayton will be in compliance with ADA.
- Buildings and municipal-owned structures will be brought into compliance as funds are available. Specific complaints will be prioritized.

D. ADA STANDARDS/GUIDELINES

The standards are intended to apply to all construction undertaken within the Town Right-of-Way. For sidewalks within the town right-of-way, the “Proposed Accessibility Guidelines for Pedestrian Facilities in the Public Right-of-Way” (PROWAG) should be used. For buildings and facilities, the “ADA Accessibility Guidelines for Buildings and Facilities” (ADAAG) should be used. Other standards, if necessary, will be applied at the discretion of the ADA Coordinator.

PUBLIC INVOLVEMENT

On April 20, 2022, at the Town Council meeting, the Town entered into contract with a consultant to provide a self-evaluation of the public rights-of-way and facilities and an ADA Transition Plan. At that time, the Town began openly discussing in public format the ADA Transition Plan. The Town Council meets every second Thursday of every month at 6:30. At the August 11, 2022, Town Council meeting the consultant presented and discussed the draft ADA Transition Plan including self-evaluation. At that time, the draft document became public record and available for a two week review and comment period. On September 8, 2020, the consultant presented the final ADA Transition Plan including self-evaluation and the Council approved it.

IMPLEMENTATION

The Town approved the ADA Transition Plan in public forum at the Town Council meeting on September 8, 2020. Implementation of the plan began on that date. Not only does the Town commit to following the guidelines set forth in this Transition Plan but it also commits to actively revising and amending this document as new information is discovered. Further, as a matter of policy, this document will be updated at least every three years. Finally, a copy of this document has been placed on file at the Town Hall, with the ADA coordinator.

APPENDIX A: COMPLAINT / GRIEVANCE FORM

Grievant Information:

Grievant Name:			
Address:	City:	State:	Zip Code:
Phone:	Email:		
Alternative Phone:			

Person Preparing Complaint Relationship to Grievant (if different from Grievant):

Grievant Name:			
Address:	City:	State:	Zip Code:
Phone:	Email:		
Alternative Phone:			

Please specify any location(s) related to the complaint or grievance (if applicable):

Please provide a complete description of the specific complaint or grievance:

BUILDING EVALUATION

The Town of Clayton, through its ADA Coordinator and hired consultant, completed a cursory building and structure review. The following sections describe the Town's various buildings and ADA facilities.

ADA Requirements	
Item:	Requirement:
Parking Stall	96" Min. Width
Parking Aisle Width	96" Min. Width
Ramp	48" Min. Width
Ramp Handrails	34" – 38" Height
Ramp Slope	1:12 Max. Running Slope 1:48 Max. Cross Slope
Door Openings	32" Min. Width
Bathroom Stall Door Opening	32' Min. Width
Bathroom Stall Dimensions	56" DEEP x 60" WIDE
Grab Bars	33" - 36" Height
Urinals	17" Max. Height
Toilet Seat	17" – 19" Min. Height
Counter / Sink	34" Max. Height
Towel Dispenser / Dryer	48" Max. Height, 20" Max. Reach Depth
Soap Dispenser	48" Max. Height, 20" Max. Reach Depth
Fountain Spout Outlet	36" Max. Height

FACILITIES EVALUATED

A. Town Hall of Clayton	11
B. Fire Department	18
C. Town Garage	24
D. Wastewater Treatment Plant	27
E. Food Pantry	32
F. Lambert Park	36

DRAFT

A. Town Hall – 4844 Iowa Street, Clayton, IN 46118



Parking Lot



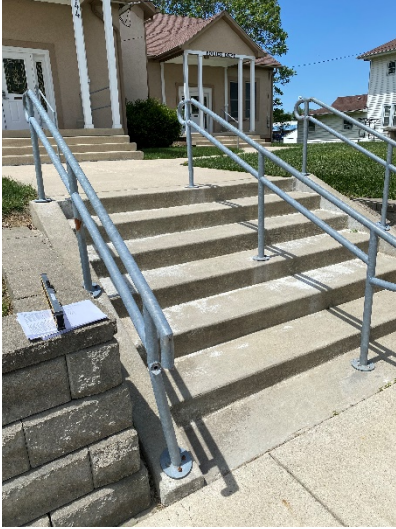
Parking Lot (2)



East Sidewalk



East Sidewalk



Handrail



Handrail (2)



Front Door Ramp



Front Door Ramp (2)



Front Door Ramp (3)



Front Door



Hallway



Unisex Restroom 1 Door



Unisex Restroom 1 Sink/Towel



Unisex Restroom 1 Toilet



Unisex Restroom 2 Door



Unisex Restroom 2 Toilet



Unisex Restroom 2 Sink/Towel

Summary of Facility

For this study, parking stalls, general door openings widths, and bathroom were assessed and compared to the required ADA standards. Listed below, and highlighted in the tables above, are the items that do not meet the ADA requirements.

ADA Non-Compliant Issues

- Handrail height exceeds the ADA standards
- Hallway Door Width does not meet the ADA standards
- Unisex Restroom 1, Door Openings, does not meet the ADA standards, Towel/Dryer and Soap Dispenser height exceeds the ADA standards
- Unisex Restroom 2, Towel/Dryer and Soap Dispenser height exceeds the ADA standards

Parking Lot			
Stall Width	Measured	105"	
	ADA	96" MIN	
Aisle Width	Measured	N/A	
	ADA	96" MIN	
Curb Ramp Width	Measured	48"	60"
	ADA	48" MIN	48" MIN
Curb Ramp Cross Slope	Measured	0.69	0.45
	ADA	2% MAX	2% MAX
Curb Ramp Running Slope	Measured	0.86	4
	ADA	8.33% MAX	8.33% MAX
Notes			

Building		
Ramp Running Slope	Measured	4.6
	ADA	8.33% MAX
Ramp Cross Slope	Measured	1.4
	ADA	2% MAX
Ramp Width	Measured	51"
	ADA	36" MIN
Ramp Handrails	Y/N	Y
Handrail Height	Measured	42"
	ADA	34" - 38"
Front Door	Measured	33"
	ADA	32" MIN
Fountain Spout Outlet Height	Measured	N/A
	ADA	36" MAX
Hallway Door Width	Measured	30.5"
	ADA	32" MIN
Notes		

Restrooms			
		Unisex 1	Unisex 2
Door Opening	Measured	28"	33.5"
	ADA	32" MIN	
Stall Door	Measured	N/A	N/A
	ADA	32" MIN	
Stall/Bathroom Dimensions	Measured	80.5"x60.5"	60"x82"
	ADA	56" DEEP X 60" WIDE	
Grab Bars	Y/N	N/A	N/A
Grab Bar Height	Measured	N/A	N/A
	ADA	33" - 36"	
Urinals	Y/N	N/A	N/A
Urinal Height	Measured	N/A	N/A
	ADA	17" MAX	
Toilet Seat Height	Measured	18"	18"
	ADA	17" - 19" MIN	
Counter/Sink Height	Measured	33"	33"
	ADA	34" MAX	
Towel/Dryer	Measured	59"	53"
	ADA	48" MAX HEIGHT, 20" MAX DEPTH	
Soap	Measured	54"x15"	51.5x15
	ADA	48" MAX HEIGHT, 20" MAX DEPTH	
Notes			

B. Fire Department – 111 E. Kentucky Street, Clayton, IN 46118



Parking Lot



Southeast Sidewalk



North Sidewalk



North Sidewalk (2)



Front Door



Hallway



Men's Restroom Door



Men's Restroom Overview



Unisex Restroom Door



Unisex Restroom Overview



Women's Restroom Door



Women's Restroom Overview

Summary of Facility

For this study, parking stalls, general door openings widths, and bathroom were assessed and compared to the required ADA standards. Listed below, and highlighted in the tables above, are the items that do not meet the ADA requirements.

ADA Non-Compliant Issues

- Men’s Restroom, Door Openings do not meet the ADA standards, Toilet Seat Height, does not meet the ADA standards, Towel/Dryer exceeds the ADA standards
- Women’s Restroom, Door Openings do not meet the ADA standards, Toilet Seat Height, does not meet the ADA standards, Towel/Dryer exceeds the ADA standards
- Unisex Restroom, Door Openings do not meet the ADA standards, Toilet Seat Height, does not meet the ADA standards, Towel/Dryer exceeds the ADA standards

Parking Lot		
Stall Width	Measured	106"
	ADA	96" MIN
Aisle Width	Measured	N/A
	ADA	96" MIN
Curb Ramp Width	Measured	N/A
	ADA	48" MIN
Curb Ramp Cross Slope	Measured	N/A
	ADA	2% MAX
Curb Ramp Running Slope	Measured	N/A
	ADA	8.33% MAX
Notes		

Building		
Ramp Running Slope	Measured	N/A
	ADA	8.33% MAX
Ramp Cross Slope	Measured	N/A
	ADA	2% MAX
Ramp Width	Measured	N/A
	ADA	36" MIN
Ramp Handrails	Y/N	N/A
Handrail Height	Measured	N/A
	ADA	34" - 38"
Front Door	Measured	33"
	ADA	32" MIN
Fountain Spout Outlet Height	Measured	N/A
	ADA	36" MAX
Hallway Door Width	Measured	35"
	ADA	32" MIN
Notes		

Restrooms				
		Men	Women	Unisex
Door Opening	Measured	30"	30"	27.5"
	ADA	32" MIN		32" MIN
Stall Door	Measured	N/A	N/A	N/A
	ADA	32" MIN		32" MIN
Stall/Bathroom Dimensions	Measured	92"x65"	92"x65"	115"x63"
	ADA	56" DEEP X 60" WIDE		56" DEEP X 60" WIDE
Grab Bars	Y/N	N/A	N/A	N/A
Grab Bar Height	Measured	N/A	N/A	N/A
	ADA	33" - 36"		33" - 36"
Urinals	Y/N	N/A	N/A	N/A
Urinal Height	Measured	N/A	N/A	N/A
	ADA	17" MAX		17" MAX
Toilet Seat Height	Measured	16"	16"	16"
	ADA	17" - 19" MIN		17" - 19" MIN
Counter/Sink Height	Measured	33.5"	33.5"	32"
	ADA	34" MAX		34" MAX
Towel/Dryer	Measured	53.5"	51"	50"
	ADA	48" MAX HEIGHT, 20" MAX DEPTH		48" MAX HEIGHT, 20" MAX DEPTH
Soap	Measured	33.5"x16"	33.5"x14"	32"x15"
	ADA	48" MAX HEIGHT, 20" MAX DEPTH		48" MAX HEIGHT, 20" MAX DEPTH
Notes				

C. Town Garage – 111 E. Kentucky Street, Clayton, IN 46118



Front Door



North Sidewalk

Summary of Facility

For this study, parking stalls, general door openings widths, and bathroom were assessed and compared to the required ADA standards. Listed below, and highlighted in the tables above, are the items that do not meet the ADA requirements.

ADA Non-Compliant Issues

- No Parking
- No Ramps, Handrails Hallways
- No Restrooms

Parking Lot		
Stall Width	Measured	N/A
	ADA	96" MIN
Aisle Width	Measured	N/A
	ADA	96" MIN
Curb Ramp Width	Measured	N/A
	ADA	48" MIN
Curb Ramp Cross Slope	Measured	N/A
	ADA	2% MAX
Curb Ramp Running Slope	Measured	N/A
	ADA	8.33% MAX
Notes: no parking		

Building		
Ramp Running Slope	Measured	N/A
	ADA	8.33% MAX
Ramp Cross Slope	Measured	N/A
	ADA	2% MAX
Ramp Width	Measured	N/A
	ADA	36" MIN
Ramp Handrails	Y/N	N
Handrail Height	Measured	N/A
	ADA	34" - 38"
Front Door	Measured	N/A
	ADA	32" MIN
Fountain Spout Outlet Height	Measured	N/A
	ADA	36" MAX
Hallway Door Width	Measured	N/A
	ADA	32" MIN
Notes: No ramps		

Restrooms			
		Men	Women
Door Opening	Measured	N/A	N/A
	ADA	32" MIN	
Stall Door	Measured	N/A	N/A
	ADA	32" MIN	
Stall/Bathroom Dimensions	Measured	N/A	N/A
	ADA	56" DEEP X 60" WIDE	
Grab Bars	Y/N	N	N
Grab Bar Height	Measured	N/A	N/A
	ADA	33" - 36"	
Urinals	Y/N	N	N
Urinal Height	Measured	N/A	N/A
	ADA	17" MAX	
Toilet Seat Height	Measured	N/A	N/A
	ADA	17" - 19" MIN	
Counter/Sink Height	Measured	N/A	N/A
	ADA	34" MAX	
Towel/Dryer	Measured	N/A	N/A
	ADA	48" MAX HEIGHT, 20" MAX DEPTH	
Soap	Measured	N/A	N/A
	ADA	48" MAX HEIGHT, 20" MAX DEPTH	
Notes: no bathrooms			

D. Wastewater Treatment Plant – 5161 S SR 39, Clayton, IN 46118



Parking Lot



Front Door



Hallway



Unisex Restroom Door



Unisex Restroom Toilet



Unisex Restroom Sink



Unisex Restroom Towel

Summary of Facility

For this study, parking stalls, general door openings widths, and bathroom were assessed and compared to the required ADA standards. Listed below, and highlighted in the tables above, are the items that do not meet the ADA requirements.

ADA Non-Compliant Issues

- No Parking Lot, gravel lot
- No Ramps or handrails
- Unisex Restroom, Door Opening dose not meet the ADA standards requirements, Stall/Restroom Dimensions does not meet the ADA standards requirements, No Urinal, Toilet Seat Height does not meet the ADA standards requirements, Counter/Sink Height exceeds the ADA standards maximum, Soap does not meet the ADA standards requirements.

Parking Lot		
Stall Width	Measured	N/A
	ADA	96" MIN
Aisle Width	Measured	N/A
	ADA	96" MIN
Curb Ramp Width	Measured	N/A
	ADA	48" MIN
Curb Ramp Cross Slope	Measured	N/A
	ADA	2% MAX
Curb Ramp Running Slope	Measured	N/A
	ADA	8.33% MAX
Notes: Gravel lot		

Building		
Ramp Running Slope	Measured	N/A
	ADA	8.33% MAX
Ramp Cross Slope	Measured	N/A
	ADA	2% MAX
Ramp Width	Measured	N/A
	ADA	36" MIN
Ramp Handrails	Y/N	N
Handrail Height	Measured	N/A
	ADA	34" - 38"
Front Door	Measured	33"
	ADA	32" MIN
Fountain Spout Outlet Height	Measured	N/A
	ADA	36" MAX
Hallway Door Width	Measured	34"
	ADA	32" MIN
Notes: No Curb Ramps		

Restrooms		
		Unisex
Door Opening	Measured	27.5"
	ADA	32" MIN
Stall Door	Measured	N/A
	ADA	32" MIN
Stall/Bathroom Dimensions	Measured	40"x60"
	ADA	56" DEEP X 60" WIDE
Grab Bars	Y/N	N
Grab Bar Height	Measured	N/A
	ADA	33" - 36"
Urinals	Y/N	N
Urinal Height	Measured	N/A
	ADA	17" MAX
Toilet Seat Height	Measured	16
	ADA	17" - 19" MIN
Counter/Sink Height	Measured	36.5"
	ADA	34" MAX
Towel/Dryer	Measured	36.5"x4"
	ADA	48" MAX HEIGHT, 20" MAX DEPTH
Soap	Measured	36.5"x24"
	ADA	48" MAX HEIGHT, 20" MAX DEPTH
Notes		

E. Food Pantry – 96 E. Kentucky Street, Clayton, IN 46118



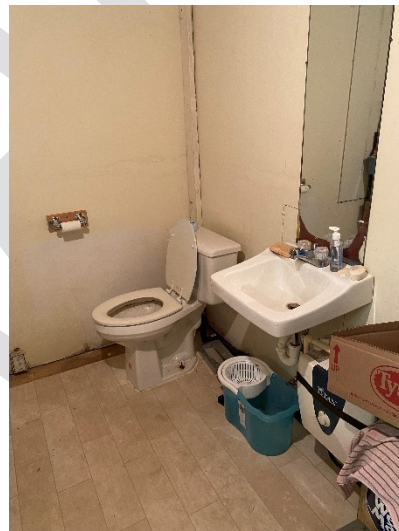
South Sidewalk



Front Door



Unisex Restroom Door



Unisex Restroom Overview

Summary of Facility

For this study, parking stalls, general door openings widths, and bathroom were assessed and compared to the required ADA standards. Listed below, and highlighted in the tables above, are the items that do not meet the ADA requirements.

ADA Non-Compliant Issues

- No Parking Lot, street parking
- No Ramps or handrails
- Unisex Restroom, No Grab Bar, No Towel/Dryer

Parking Lot		
Stall Width	Measured	N/A
	ADA	96" MIN
Aisle Width	Measured	N/A
	ADA	96" MIN
Curb Ramp Width	Measured	N/A
	ADA	48" MIN
Curb Ramp Cross Slope	Measured	N/A
	ADA	2% MAX
Curb Ramp Running Slope	Measured	N/A
	ADA	8.33% MAX
Notes: street parking		

Building		
Ramp Running Slope	Measured	N/A
	ADA	8.33% MAX
Ramp Cross Slope	Measured	N/A
	ADA	2% MAX
Ramp Width	Measured	N/A
	ADA	36" MIN
Ramp Handrails	Y/N	N
Handrail Height	Measured	N/A
	ADA	34" - 38"
Front Door	Measured	39"
	ADA	32" MIN
Fountain Spout Outlet Height	Measured	N/A
	ADA	36" MAX
Hallway Door Width	Measured	N/A
	ADA	32" MIN
Notes: No ramps		

Restrooms		
		Unisex
Door Opening	Measured	33.5"
	ADA	32" MIN
Stall Door	Measured	N/A
	ADA	32" MIN
Stall/Bathroom Dimensions	Measured	113"x72"
	ADA	56" DEEP X 60" WIDE
Grab Bars	Y/N	N
Grab Bar Height	Measured	N/A
	ADA	33" - 36"
Urinals	Y/N	N/A
Urinal Height	Measured	N/A
	ADA	17" MAX
Toilet Seat Height	Measured	18.5"
	ADA	17" - 19" MIN
Counter/Sink Height	Measured	31.5"
	ADA	34" MAX
Towel/Dryer	Measured	N/A
	ADA	48" MAX HEIGHT, 20" MAX DEPTH
Soap	Measured	34"x13"
	ADA	48" MAX HEIGHT, 20" MAX DEPTH
Notes: No towel/dryer		

F. Lambert Park – 315 W. Michigan, Clayton, IN 46118



Parking Lot



Parking Lot (2)



North Sidewalk



North Sidewalk (2)



North Sidewalk (3)



North Sidewalk (4)



Front Door



Pavilion



Storage Building



Picnic Shelter



Gazebo



Men's Restroom



Women's Restroom Door



Women's Restroom Sink/Towel



Women's Restroom Toilet

Summary of Facility

For this study, parking stalls, general door openings widths, and bathroom were assessed and compared to the required ADA standards. Listed below, and highlighted in the tables above, are the items that do not meet the ADA requirements.

ADA Non-Compliant Issues

- Parking Lot, no lines painted
- No Ramps or handrails
- Men’s Restroom, No Stall Doors, No Grab Bar, Towel/Dryer exceeds the ADA standards.
- Women’s Restroom, No Stall Doors, No Grab Bar, Towel/Dryer exceeds the ADA standards.

Parking Lot		
Stall Width	Measured	N/A
	ADA	96" MIN
Aisle Width	Measured	N/A
	ADA	96" MIN
Curb Ramp Width	Measured	N/A
	ADA	48" MIN
Curb Ramp Cross Slope	Measured	N/A
	ADA	2% MAX
Curb Ramp Running Slope	Measured	N/A
	ADA	8.33% MAX
Notes: no lines painted in lots		

Building		
Ramp Running Slope	Measured	N/A
	ADA	8.33% MAX
Ramp Cross Slope	Measured	N/A
	ADA	2% MAX
Ramp Width	Measured	N/A
	ADA	36" MIN
Ramp Handrails	Y/N	N
Handrail Height	Measured	N/A
	ADA	34" - 38"
Front Door	Measured	33"
	ADA	32" MIN
Fountain Spout Outlet Height	Measured	N/A
	ADA	36" MAX
Hallway Door Width	Measured	N/A
	ADA	32" MIN
Notes: no ramps.		

Restrooms			
		Men	Women
Door Opening	Measured	33"	33"
	ADA	32" MIN	
Stall Door	Measured	N/A	N/A
	ADA	32" MIN	
Stall/Bathroom Dimensions	Measured	90"x90"	90"x90"
	ADA	56" DEEP X 60" WIDE	
Grab Bars	Y/N	N	N
Grab Bar Height	Measured	N/A	
	ADA	33" - 36"	
Urinals	Y/N	Y	N/A
Urinal Height	Measured	17"	N/A
	ADA	17" MAX	
Toilet Seat Height	Measured	17.5"	16"
	ADA	17" - 19" MIN	
Counter/Sink Height	Measured	31"	33"
	ADA	34" MAX	
Towel/Dryer	Measured	49"	49"
	ADA	48" MAX HEIGHT, 20" MAX DEPTH	
Soap	Measured	43"x14"	43"x14"
	ADA	48" MAX HEIGHT, 20" MAX DEPTH	
Notes			

APPENDIX C: SIDEWALK AND CURB RAMP REVIEW

The Town of Clayton, through its ADA Coordinator and hired consultant, completed a sidewalk and curb ramp review. The sidewalk and curb ramp locations are sorted by alphabetical order.

The following describes the Town's evaluation.

Sidewalks will be evaluated as follows:

- No Sidewalk
- Compliant
- Non-compliant, spot repairs needed (NC-Spot) (i.e. obstructions/defects that can be spot repaired)
- Non-compliant, full segment needs replaced (NC-Full) (non-compliant cross slope, running slope, condition, width, etc.)

Curb ramps will be evaluated as follows:

- Compliant
- Non-compliant but navigable (NC-Nav) (i.e. missing detectable warnings, non-compliant slopes, etc., but can be used by a wheelchair)
- Non-compliant, non-navigable (NC-Non-Nav) (sidewalk present)
- No curb ramp (no sidewalk present)

SIDEWALK EVALUATION

STREET NAME	FROM	TO	LEFT SIDEWALK	RIGHT SIDEWALK
Ader Ave.	State Road 39	Dead end	No Sidewalk	No Sidewalk
Amo St.	Ohio St.	Dead end	No Sidewalk	No Sidewalk
County Road 500	Iowa St.	Michigan St.	Compliant	No Sidewalk
Crawford St.	State Road 39	Regan Ave.	Compliant	No Sidewalk
Cross St.	Pennsylvania St.	Regan Ave.	Compliant	Compliant
Cross St.	State Road 39	Pennsylvania St.	Compliant	NC-Full
Cumberland St.	Dead end	Kentucky St.	No Sidewalk	No Sidewalk
Cumberland St.	Kentucky St.	Michigan St.	NC-Full	NC-Full
David Dr.	Ruth Eunice Dr.	Lena Ln.	Compliant	Compliant
Iowa St.	County Road 500	Tennessee St.	NC-Spot	NC-Spot
Iowa St.	Tennessee St.	State Road 39	Compliant	Compliant
Kathryn Ct.	Lena Ln.	Dead end	Compliant	Compliant
Kentucky St.	Western St.	State Road 39	Compliant	Compliant
Lena Ln.	Martha Eunice	David Dr.	Compliant	Compliant
Martha Eunice	Michigan St.	Dead end	Compliant	Compliant
Melville Ct.	Martha Eunice	Dead end	Compliant	Compliant
Michigan St.	Martha Eunice	Western St.	Compliant	No Sidewalk
Michigan St.	Pennsylvania St.	Ohio St.	NC-Spot	NC-Spot
Michigan St.	Ruth Eunice Dr.	Martha Eunice Ln.	Compliant	Compliant
Michigan St.	State Road 39	Pennsylvania St.	NC-Spot	No Sidewalk
Michigan St.	West County Rd.	Ruth Eunice Dr.	No Sidewalk	No Sidewalk
Michigan St.	Western St.	State Road 39	Compliant	Compliant
Ohio St.	Amo St.	State Road 39	Compliant	NC-Full
Ohio St.	Crawford St.	Dead end	No Sidewalk	No Sidewalk
Ohio St.	Cross St.	Crawford St.	Compliant	NC-Spot
Ohio St.	Michigan St.	Cross St.	Compliant	Compliant
Ohio St.	State Road 39	Michigan St.	Compliant	NC-Spot

CURB RAMP EVALUATION

STREET INTERSECTION	NW CORNER	NE CORNER	SW CORNER	SE CORNER
Adler Ave./Pennsylvania St.	No Curb Ramp	No Curb Ramp	No Curb Ramp	No Curb Ramp
Adler Ave./State Road 39	Compliant	Compliant	Compliant	Compliant
Amo St./Ohio St.	Compliant	NC-Non-Nav	Compliant	No Curb Ramp
Co. Rd. 500 S./Iowa St.	NC-Nav	NC-Nav	NC-Nav	NC-Nav
Crawford St./Ohio St.	Compliant	Compliant	Compliant	Compliant
Crawford St./Pennsylvania St.	Compliant	Compliant	Compliant	Compliant
Crawford St./Regan Ave.	No Curb Ramp	No Curb Ramp	No Curb Ramp	NC-Non-Nav
Crawford St./State Road 39	Compliant	Compliant	Compliant	Compliant
Cross St./Ohio St.	Compliant	Compliant	Compliant	Compliant
Cross St./Pennsylvania St.	Compliant	Compliant	NC-Nav	Compliant
Cross St./Regan Ave.	NC-Nav	NC-Non-Nav	NC-Nav	No Curb Ramp
Cross St./State Road 39	Compliant	Compliant	Compliant	Compliant
David Dr./Lena Ln.	NC-Nav	NC-Nav	NC-Nav	NC-Nav
David Dr./Ruth Elizabeth Dr.	NC-Nav	NC-Nav	NC-Nav	NC-Nav
Kentucky St./Cumberland St.	Compliant	Compliant	Compliant	Compliant
Kentucky St./Parker St.	Compliant	Compliant	Compliant	Compliant
Kentucky St./State Road 39	Compliant	Compliant	Compliant	Compliant
Kentucky St./Western St.	Compliant	Compliant	Compliant	Compliant
Lena Ln./Kathryn Ct.	NC-Nav	NC-Nav	NC-Nav	NC-Nav
Martha Eunice Ln. /Lena Ln.	NC-Nav	NC-Nav	NC-Nav	NC-Nav
Martha Eunice Ln. /Melville Ct.	NC-Nav	NC-Nav	NC-Nav	NC-Nav
Martha Eunice Ln./Ruth Elizabeth	NC-Nav	NC-Nav	NC-Nav	NC-Nav
Michigan St./Co. Rd. 500 S.	No Curb Ramp	No Curb Ramp	No Curb Ramp	No Curb Ramp
Michigan St./Cumberland St.	Compliant	Compliant	Compliant	Compliant
Michigan St./Martha Eunice Ln.	Compliant	Compliant	No Curb Ramp	No Curb Ramp
Michigan St./Ohio St.	Compliant	NC-Nav	Compliant	NC-Nav
Michigan St./Parker St.	Compliant	Compliant	Compliant	Compliant

